

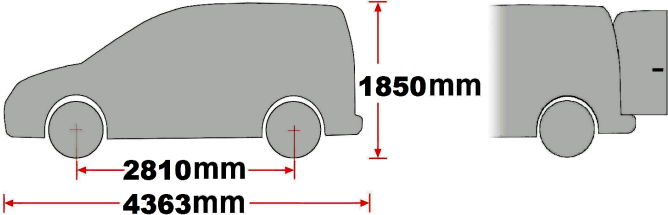


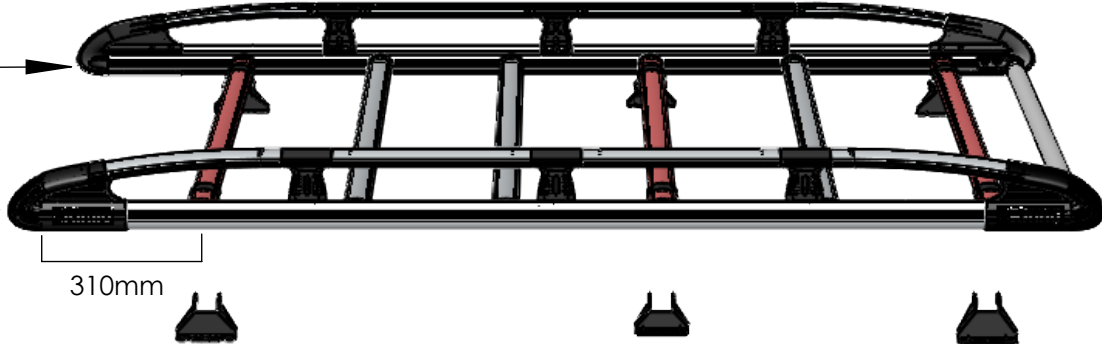


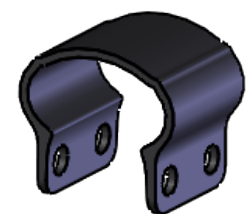
ALUMINIUM RACK - TYPE DESIGNATION FORM I

<div><h1>AH623</h1><div><div>26kg</div></div><div><div>+</div><div></div><div><div>xx kg</div><div>=</div><div>Max. 80kg</div></div></div></div>	<div><div>DOKKER 2012- L1, H1, TWIN DOORS</div><div></div></div>	<div><div><div> x 8</div><div> x 8</div></div><div></div></div>
--	--	--

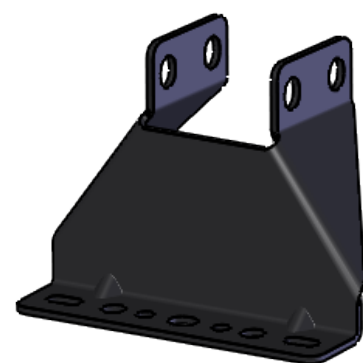
--	--	--

--	--	--

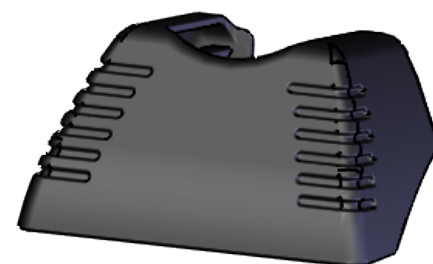
--	--	--



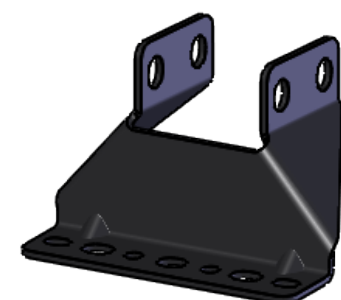
EXT09-004 x 1



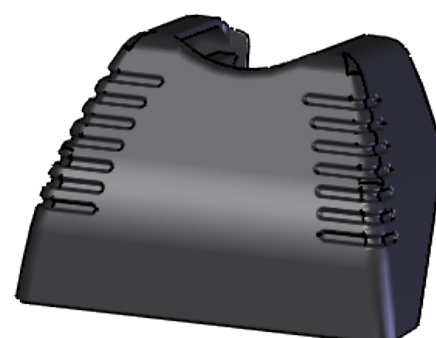
MS168 x 2



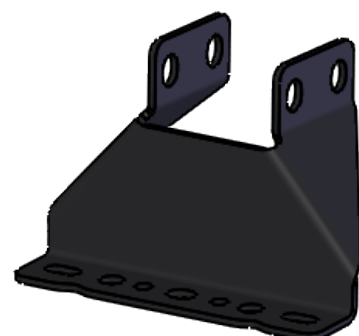
PS096 x 4



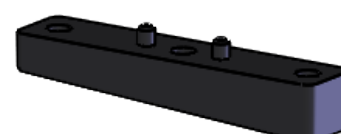
MS176 x 2



PS095 x 2



MS199 x 2



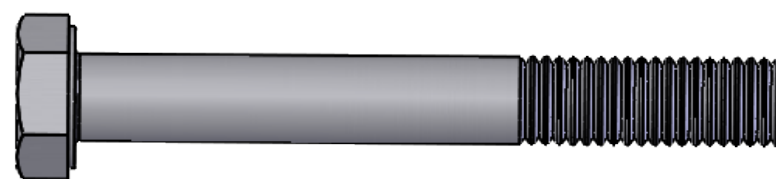
PS081 x 2



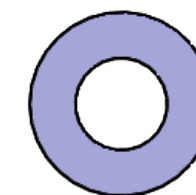
PS023 x 4



PS053 x 2



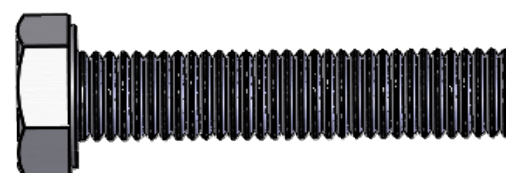
FB012 (M8 x 65) x 12



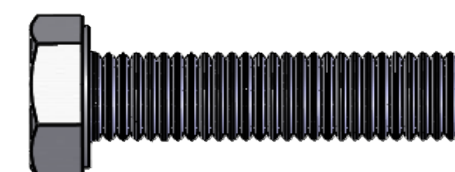
FW037 (M8) x 24



FN006 (M8) x 12



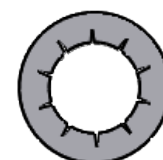
FS066 (M8 x 40) x 2



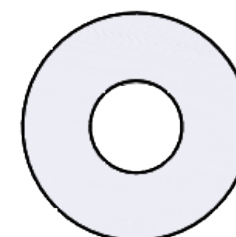
FS061 (M8 x 35) x 2



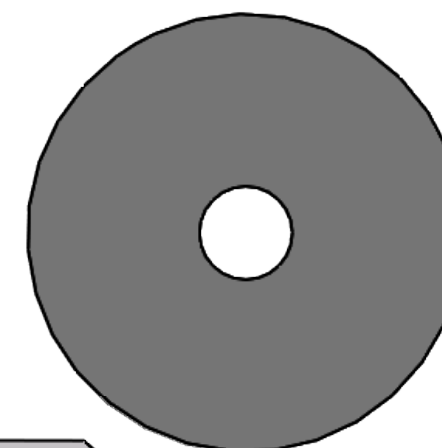
FS062 (M8 x 25) x 2



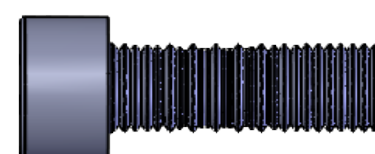
FW009 (M8) x 6



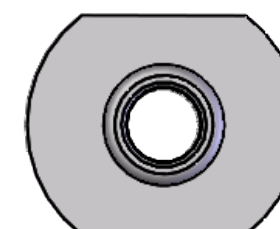
FW002 (M8)x 6



PS260 x 6



FS059 (M8) x 16



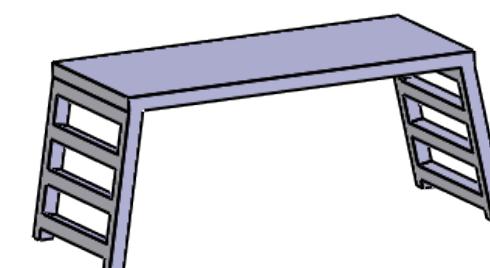
FN023 x 16



FT01 x 1

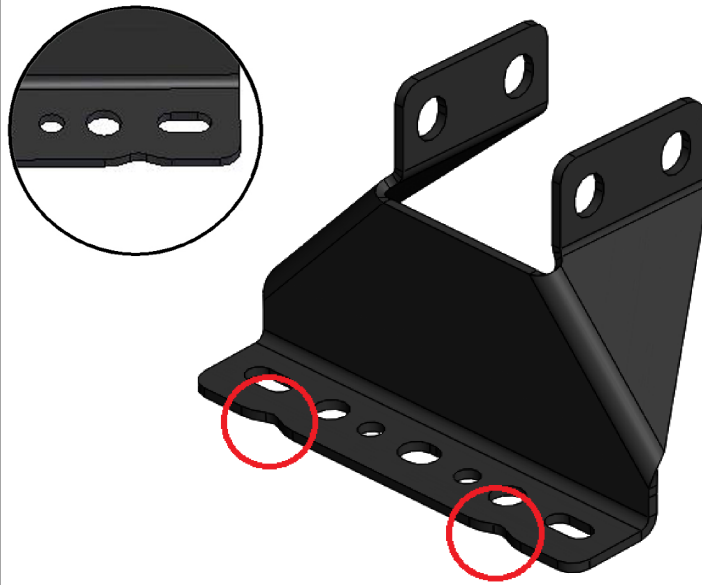
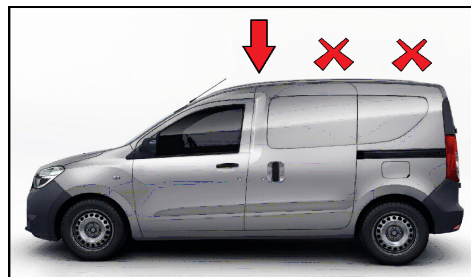


13mm x 2

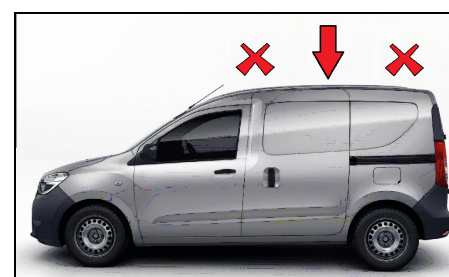


MS199

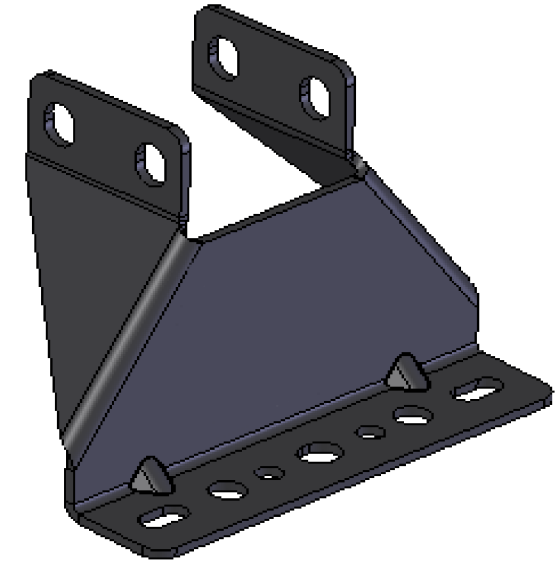
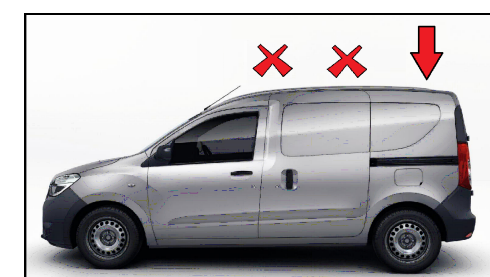
1.

**F****R****MS176**

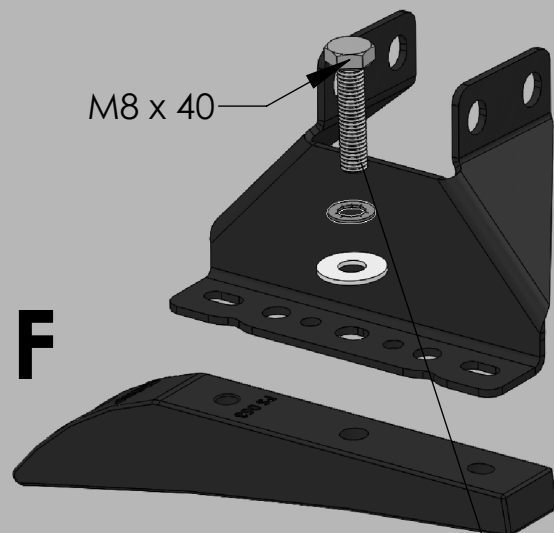
2.

**F****R****MS168**

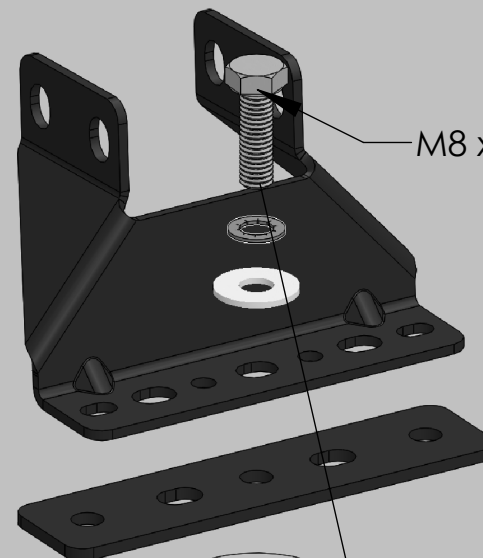
3.

**F****R**

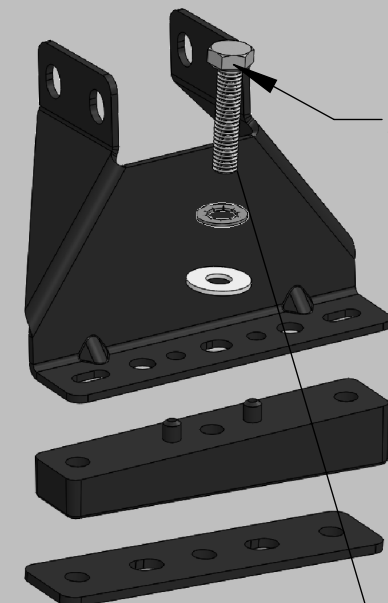
M8 x 40

F**R**

M8 x 25



M8 x 35

F**R**